

Stainless Steel Sculpture situated in the Kings Cross district of London, polished by Vecom UK

The sculpture is sited in the centre of a restored grade 2 listed Victorian Gas holder frame. The Stainless Steel top ring plates were polished on both sides before each plate was cut into 16 equal sections to make up the ring. The columns that hold the ring in place are made of Stainless Steel plates that were also polished on both sides before being cut to size. Vecom is proud to have participated in this beautiful project. Read more in the article below that was published in Mail Online.

MailOnline

News

Home **News** | U.S. | Sport | TV&Showbiz | Australia | Femail | Health | Science | Money | Video | Travel | Fashion Finder

Latest Headlines | News | World News | Arts | Headlines | Pictures | Most read | News Board | Wires

Login

Gas works! Grade II-listed gasholder near King's Cross in London restored before being transformed into park for the public

- Constructed in the 1850s, Gasholder No8 used to hold 1.1million cubic feet of gas, but is now London's newest park
- The fragile 82ft circular guide frame was dismantled from its old location, where Pancras Square is now, in 2011
- It was then refurbished by Shepley Engineers, a specialist restorer based in Yorkshire, before being reerected

By TED THORNHILL FOR MAILONLINE

PUBLISHED: 09:28 GMT, 10 November 2015 | UPDATED: 14:26 GMT, 10 November 2015

If you thought you'd never put an industrial gasholder on your list of must-see London attractions, you may need to reconsider.

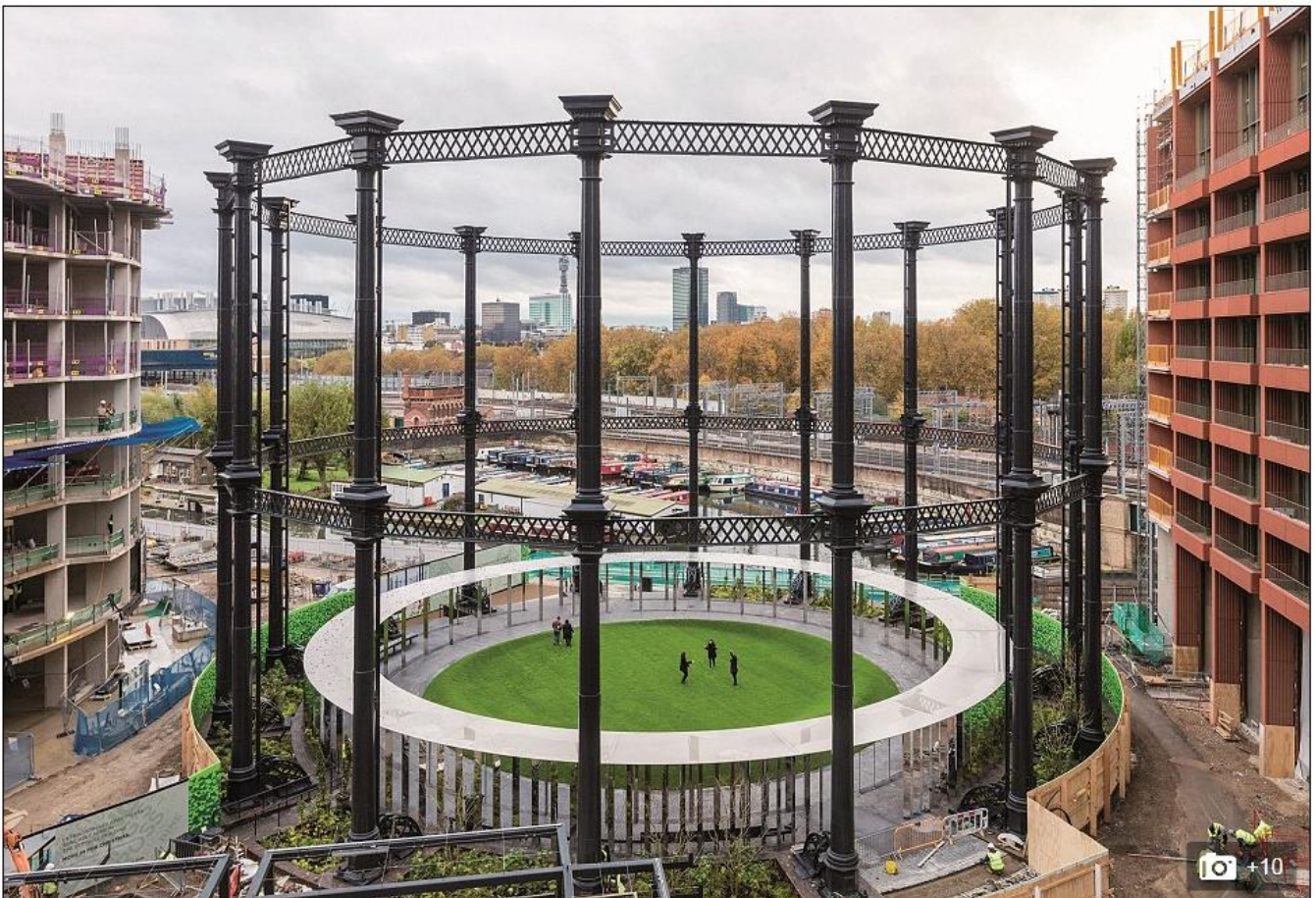
A Victorian gasholder has been given an unlikely makeover and transformed into the capital's newest park.

Gasholder Park, which opened on Monday, is a new green space in the heart of King's Cross – a circular lawn that sits inside the carefully restored frame of a Grade II Victorian gasholder, Gasholder No8. Constructed in the 1850s, it used to hold 1.1million cubic feet of gas, but will now provide a space for Londoner's to relax in, as well as being a venue for events and displays.

The fragile 25metre-high (82 feet) circular guide frame, which has an internal diameter of 40 metres (130 feet), was painstakingly dismantled from its old location, where Pancras Square is now, in 2011.

It was then refurbished by Shepley Engineers, a specialist restorer based in Yorkshire, before being reerected in 2013 its new home, next to schools and apartments in the Plimsoll Building and the triplet of Gasholders, also apartments, being built beside the Regent's Canal.

Bell Phillips Architects won a design competition to design Gasholder Park in 2009. Hari Phillips, partner at Bell Phillips Architects said: 'Gasholder Park is a fantastic project which combines the industrial heritage of King's Cross with contemporary architecture to create a unique place.'

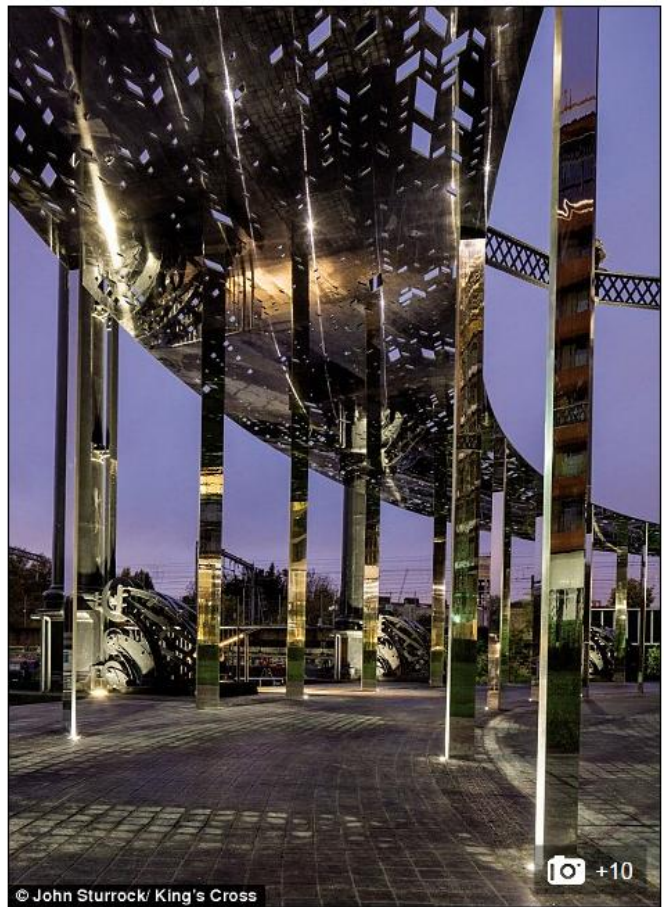


+10

Gasholder Park is a new green space in the heart of King's Cross – a circular lawn that sits inside the carefully restored frame of a Grade II Victorian gasholder, Gasholder No8



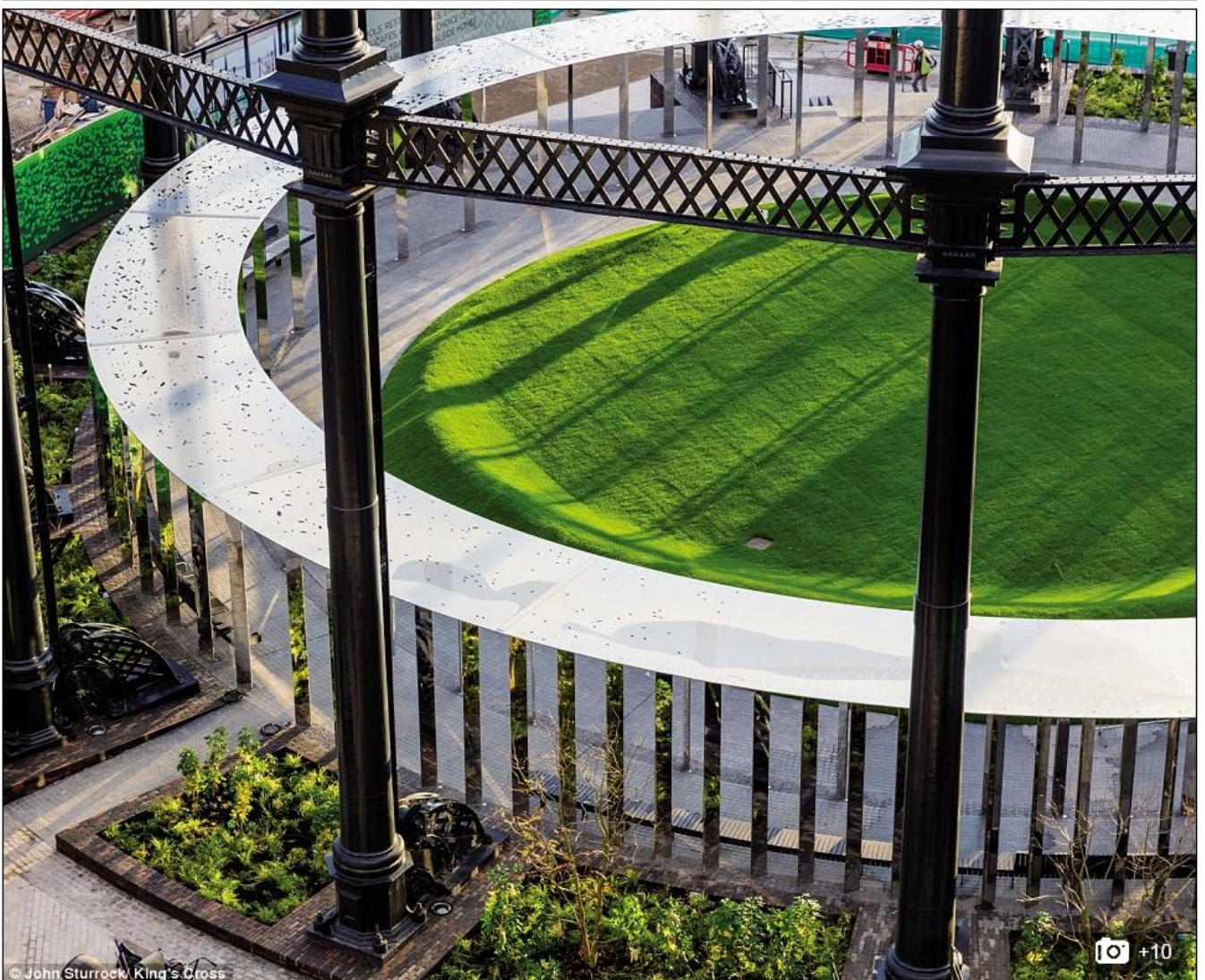
© John Sturrock/ King's Cross



© John Sturrock/ King's Cross



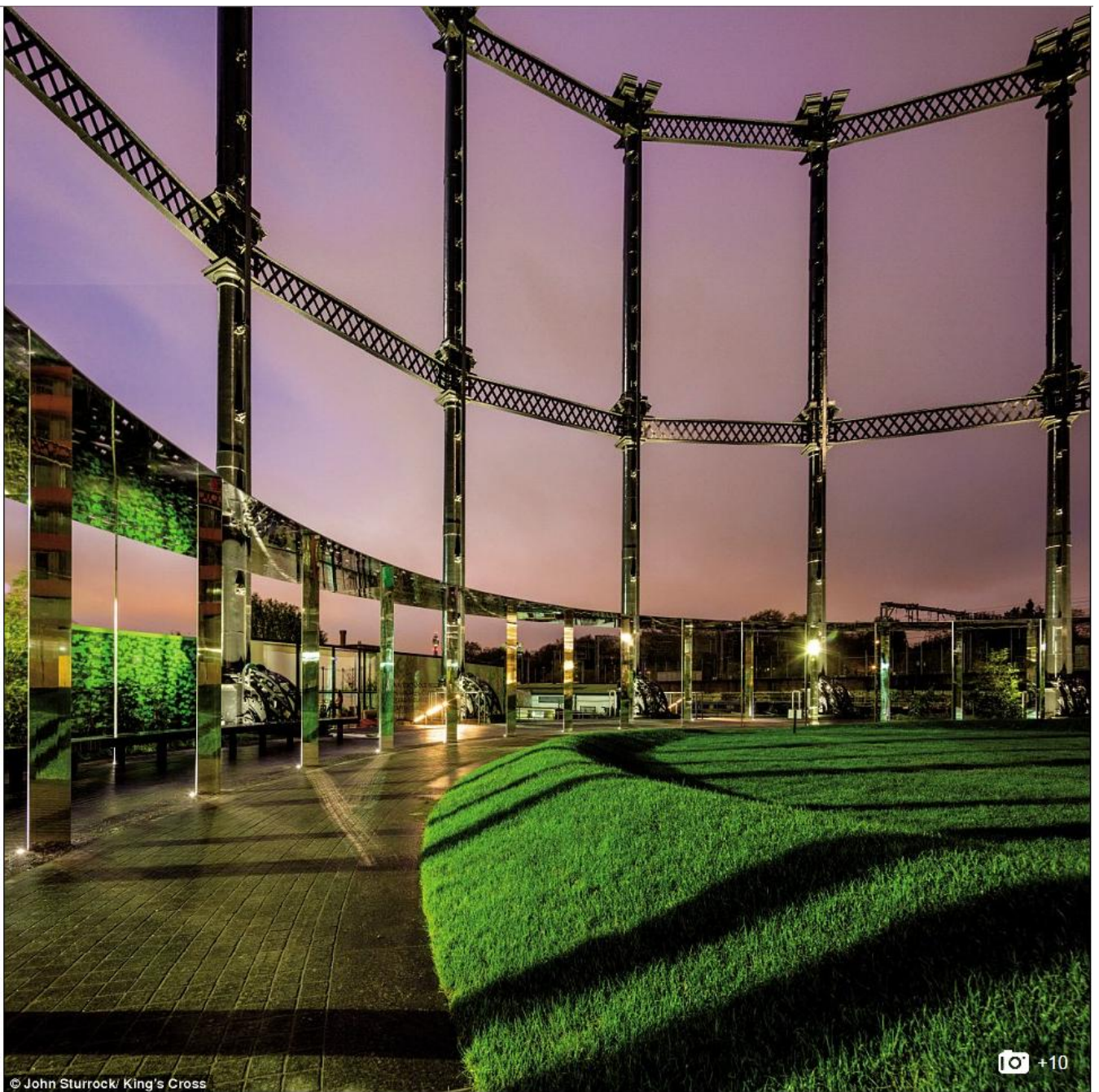
Gasholder No8 was refurbished by Shepley Engineers, a specialist restorer based in Yorkshire



© John Sturrock/ King's Cross



Bell Phillips Architects won a design competition to design Gasholder Park in 2009



© John Sturrock/ King's Cross

+10

Hari Phillips, partner at Bell Phillips Architects said: 'Gasholder Park is a fantastic project which combines the industrial heritage of King's Cross with contemporary architecture to create a unique place'